



Rural Health Field Group Placement



Scott Hallal-Negishi is in the MPH program at the Medical College of Wisconsin. He graduated with a B.A. in English from the University of Hawaii. As an undergraduate, he volunteered as an intern for the Governor's Policy Office and applied his research skills in legislature. He has worked for Hawaii Medical Service Association as an Underwriter. He currently lives in Minneapolis, Minnesota and works as a Healthcare Data Analyst. He is interested in connecting efforts of private, public, and community organizations to create a sustainable future in healthcare and the economy. By closing the gap between private, public, and community efforts he hopes to see improvements in rural hospitals and surrounding communities.

Brittany Grogan received her B.S. in Kinesiology from UW-Madison in May 2012, and is a student in the UW-Madison Master of Public Health program. Her first experience in public health was working for the Survey of the Health of Wisconsin (SHOW) in the summer of 2011. She now works as an office associate for the Wisconsin State Lab of Hygiene in the Occupational Health and Safety Department. Her main areas of interest are chronic disease and obesity prevention and she would like to work in preventive public health. She's interested in this project because her work at SHOW allowed her to see the various needs and disparities that are apparent in rural versus urban areas.



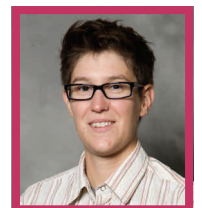
Shaini Kothari holds an undergraduate degree from UW-Madison in Medical Microbiology and Immunology. She is currently working toward an MS in Population Health, along with a Certificate in Global Health, at UW-Madison. Learning about international health, especially in the rural settings in India where she grew up, was the greatest motivator in pursuing this career path. She is hoping to further her skills in the development sector of rural health with this opportunity in rural Wisconsin. She hopes to pursue a PhD in Epidemiology, and work for an international agency like the World Health Organization or the United Nations, or alternatively, with a Public Health department in her own country with a focus on rural development.

Amy Papsun is a JD/MPH dual degree student at the UW-Madison. Prior to starting her graduate studies, Amy worked as a paralegal in Washington, DC. Amy has interned at the U.S. Department of Justice, Wisconsin Department of Justice, and the Pension Benefit Guaranty Corporation. Amy is particularly interested in the regulatory aspects of public health. In the future, she hopes to work for a policymaking organization or the federal government. After seeing how the government reimburses various types of health care providers, Amy was drawn to the WORH project as an opportunity to learn about other methods of sponsoring health care.



Stephanie Kroll is a current MPH student at the UW-Madison, and a Project Assistant at the UW Population Health Institute. Before enrolling in the MPH program, she earned a B.S. in Genetics and a Certificate in Global Health from the UW-Madison. Stephanie has been a member of the evaluation team at the UW Population Health Institute for two and a half years, an undergraduate researcher in a Medical Microbiology & Immunology Laboratory (Welch Lab) for three years. Stephanie has a personal connection to this particular project because she herself is from a small rural community. In the future, Stephanie hopes to improve the health of communities and, in particular, rural communities.

Bri Deyo is a first year MPH student. She received her B.S. in Nutritional Science from the UW-Madison in 2010. She spent 2011 with the Survey of the Health of Wisconsin (SHOW), where she conducted surveys across the state. She was the only member of the survey team to earn a Commercial Driver's License in order to drive the 37' Mobile Exam Center, where physical measurements of survey participants were taken. It was in her work with SHOW where she gained interest in the field of Rural Public Health. She currently is employed with the Asthma, Allergy, and Pulmonary Pharmaceutical Research Unit at UW-Madison. She enjoys the clinical lab aspect of this type of research.





Dr. Candace Peterson is the Director of Operations at Connections Counseling, a substance abuse and mental health clinic in Madison, WI. Dr. Peterson joined Connections Counseling in summer 2013, after spending seven years at the University of Wisconsin-Madison School of Medicine and Public Health. She has spent three decades implementing and evaluating evidence-based public health practices at the state, county and community levels.

Dr. Peterson received her Bachelor of Science in Physical Education from Northern Arizona University, a Master of Arts in Public Policy and Administration from the University of Wisconsin-Madison, and a PhD in Adult Education from the University of Wisconsin-Madison, with her dissertation focusing on experiential learners.

The Wisconsin Center for Public Health Education and Training (WiCPHET) works to ensure the development of a competent, sufficient, and diverse public health work force to promote and protect health. The WiCPHET is a collaborative project between four academic partners and a number of public health agencies including:

Academic Partners

University of Wisconsin – Madison, Milwaukee, and La Crosse, and the Medical College of Wisconsin

Practice Partners

Wisconsin Department of Health Services

Wisconsin Area Health Education Centers

Wisconsin Public Health Association

Wisconsin Association of Local Health Departments and Boards

As part of its mission to help strengthen the public health workforce, the Wisconsin Center for Public Health Education and Training (WiCPHET) coordinates field placement opportunities in which MPH students work as a group on projects to improve public health in various areas of Wisconsin.

The projects are meant to provide a great learning experience for students, a chance to meet and learn from experienced public health practitioners, an opportunity to work with students and faculty from other campuses in addition to being part of an effort to help improve population health and build community capacity. These opportunities are open to MPH students from any of the four collaborating academic institutions.

The Wisconsin Office of Rural Health's (WORH)

Rural Community Grant Program provides funding to coalitions, which include a rural hospital with fewer than 50 beds, to address a population health care issue. Six MPH students, 5 from UW-Madison, and one from Medical College of Wisconsin participated in the grant selection process, meeting with the rural community coalitions, assisting with the development of outcome based evaluation strategies, and sharing a final evaluation plan for each of the grantees. The experience also included activities to develop a series of educational sessions for rural hospitals and coalitions on program planning and evaluation delivered via distance education.

Project Partners

- Edgerton Coalition for a Healthy Community
 - Edgerton Hospital
 - Partner in Prevention– Rock County
 - Edgerton Fire and Police Departments
 - Edgerton School District
- Live LiFe Iron County
 - Iron County Health Department
 - Iron County Human Services Agency
 - University of WI Extension–Iron County
 - Aspirus Grand View Hospital
- Jackson in Action Initiative-Together For Jackson County Kids
 - Black River Memorial Hospital
 - Black River Falls School District

WiCPHET

